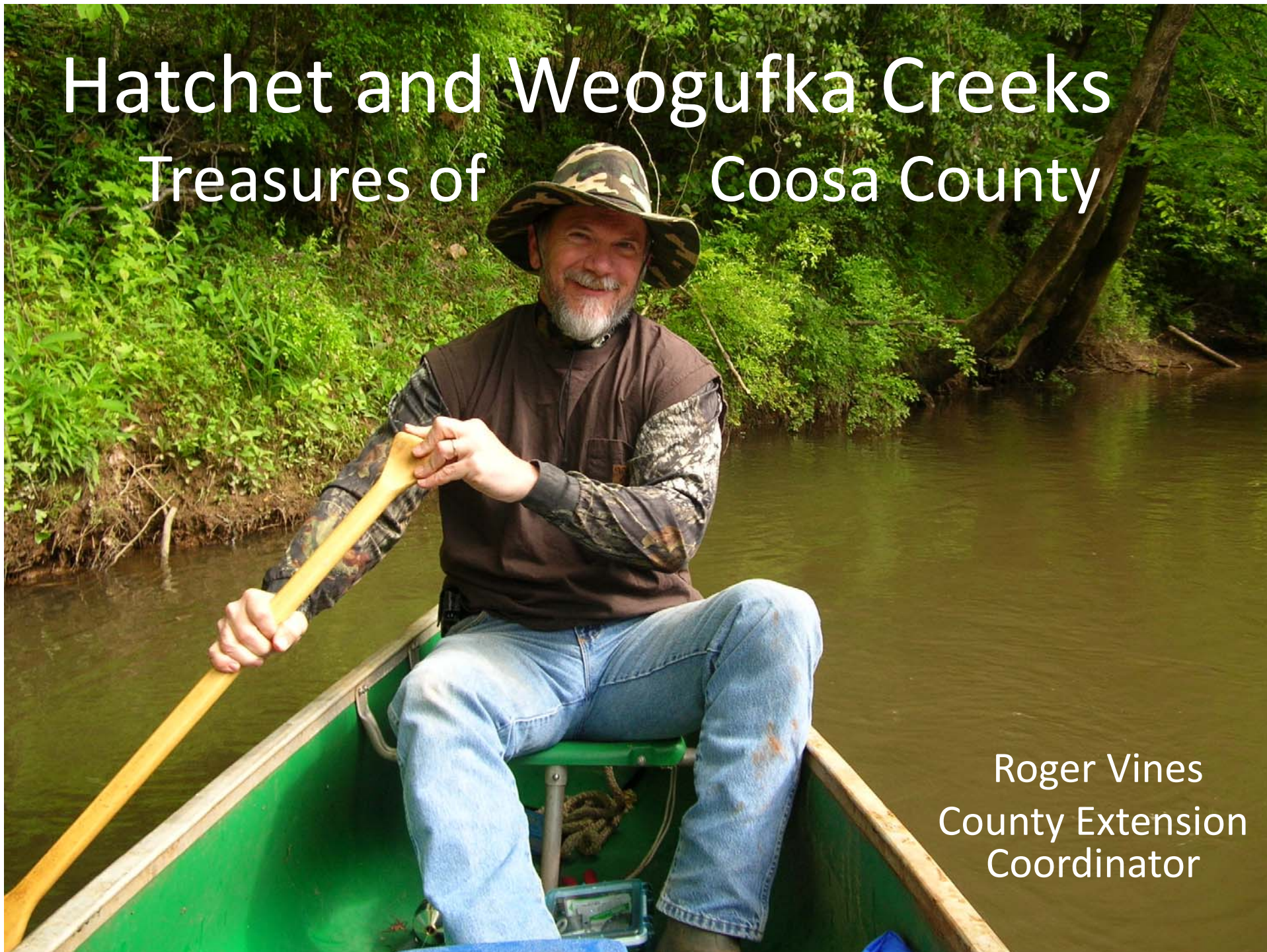


# Hatchet and Weogufka Creeks

## Treasures of Coosa County



Roger Vines  
County Extension  
Coordinator



# Overview

- Coosa County – The Heart of Alabama
- Very rural county with an abundance of natural resources- forestland, pastures, ponds, lakes, streams, wildlife and fish
- Bordered by the Coosa River on the west and the Tallapoosa River on the east
- The county has two large streams, Hatchet and Weogufka Creeks that are popular floating trips.



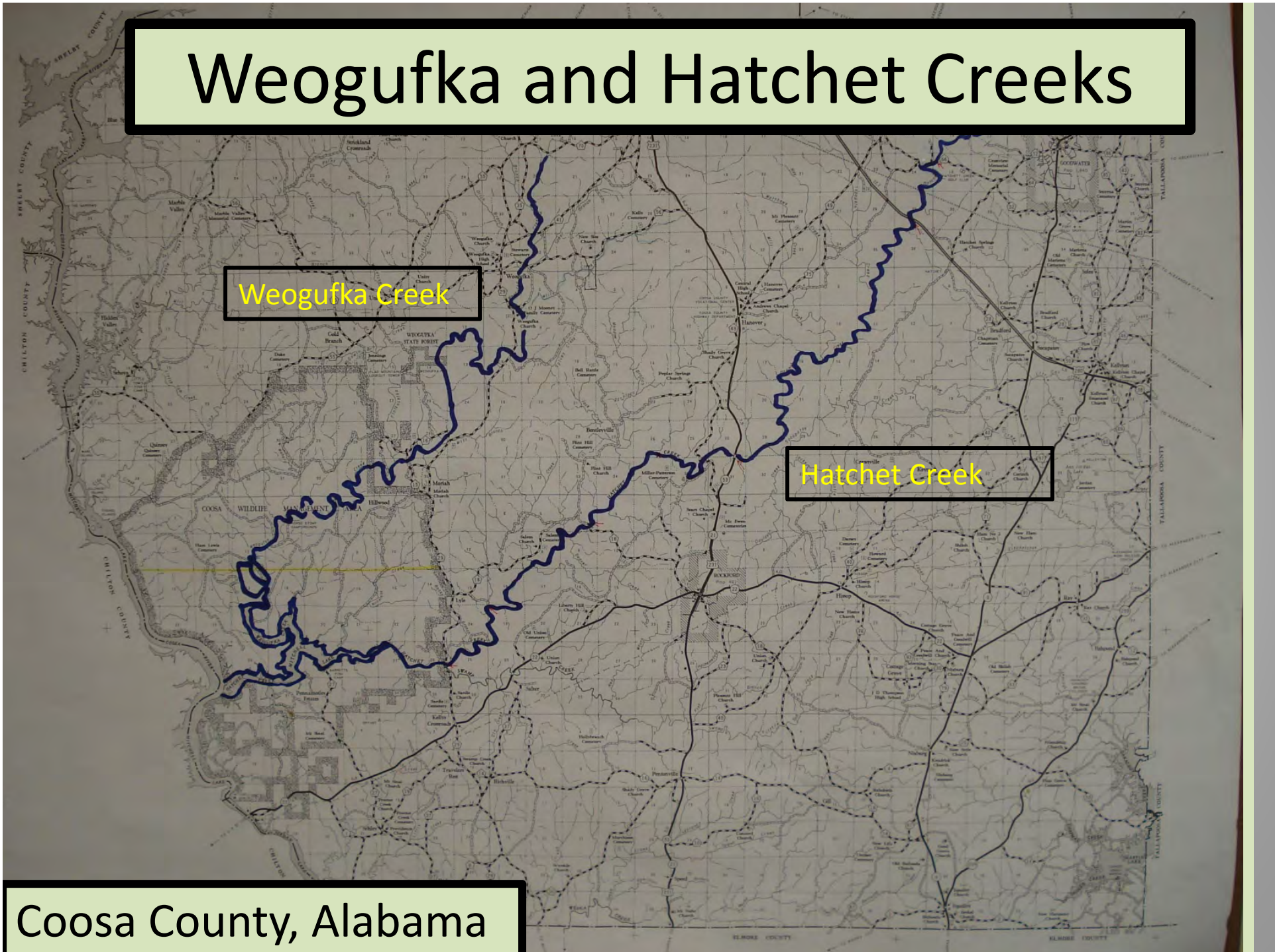


# Weogufka and Hatchet Creeks

Weogufka Creek

Hatchet Creek

Coosa County, Alabama





# Coosa Creeks Map and Visitor Guide

Project funded by a grant from the  
Coosa Valley R.C.& D Council

Purpose: To develop a map that  
will highlight the floating  
opportunities on Hatchet and  
Weogukfa Creeks in Coosa County

Goal: Develop a map to include a  
variety of topics and information :

- GPS locations of all launch sites
- Photos of unique features
- Public campsites
- Description of plants and animals
- Historical information
- Estimated travel time & distances
- Other general tips and contacts



# The Expedition Crew

Roger Vines

Chuck Browne

David Kelley

Shane Harris





# Creeks Designated as a Spur of the Alabama Scenic River Trail

President, Fred Couch



The ASRT is a 631 mile float trail from the Alabama/Georgia line in Cherokee County down the Coosa River to the Gulf of Mexico



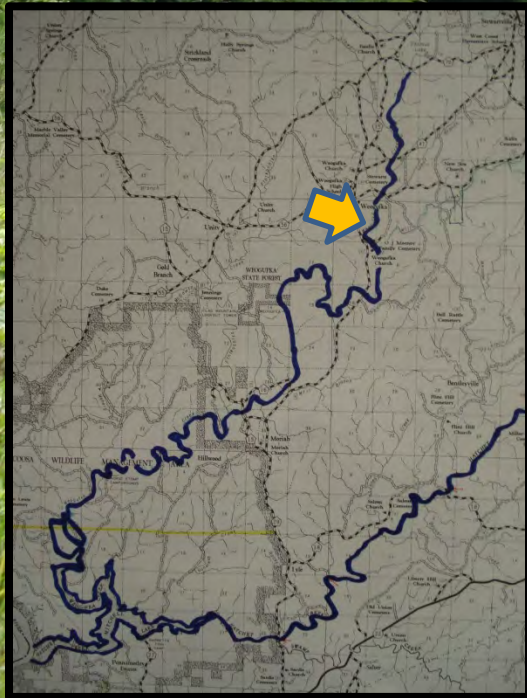
# Weogufka Creek

- Weogufka is a Native American word for Muddy Water
- Upper end flows through forest and farm land and the lower end is completely wild as it enters the Coosa Wildlife Management Area
- There are six float sections that are 4 or 5 hours each to float at a casual pace (one section is a short 1 hour)
- Water level can be low by late spring/early summer



# County Road 112 (Launch #1)

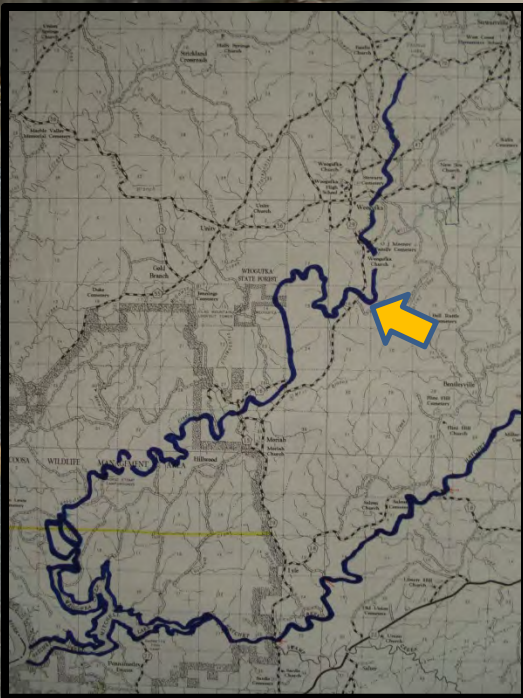
One mile south of Weogufka





# South Weogufka (Launch #2)

Co. Rd. 29 – Two miles south of Weogufka



- Access is difficult on this section
- Landowner may grant access to a better launch site on back side of pasture by permission only
- This section is likely to have some downed logs and portages
- With moderate water flow the float takes about five hours



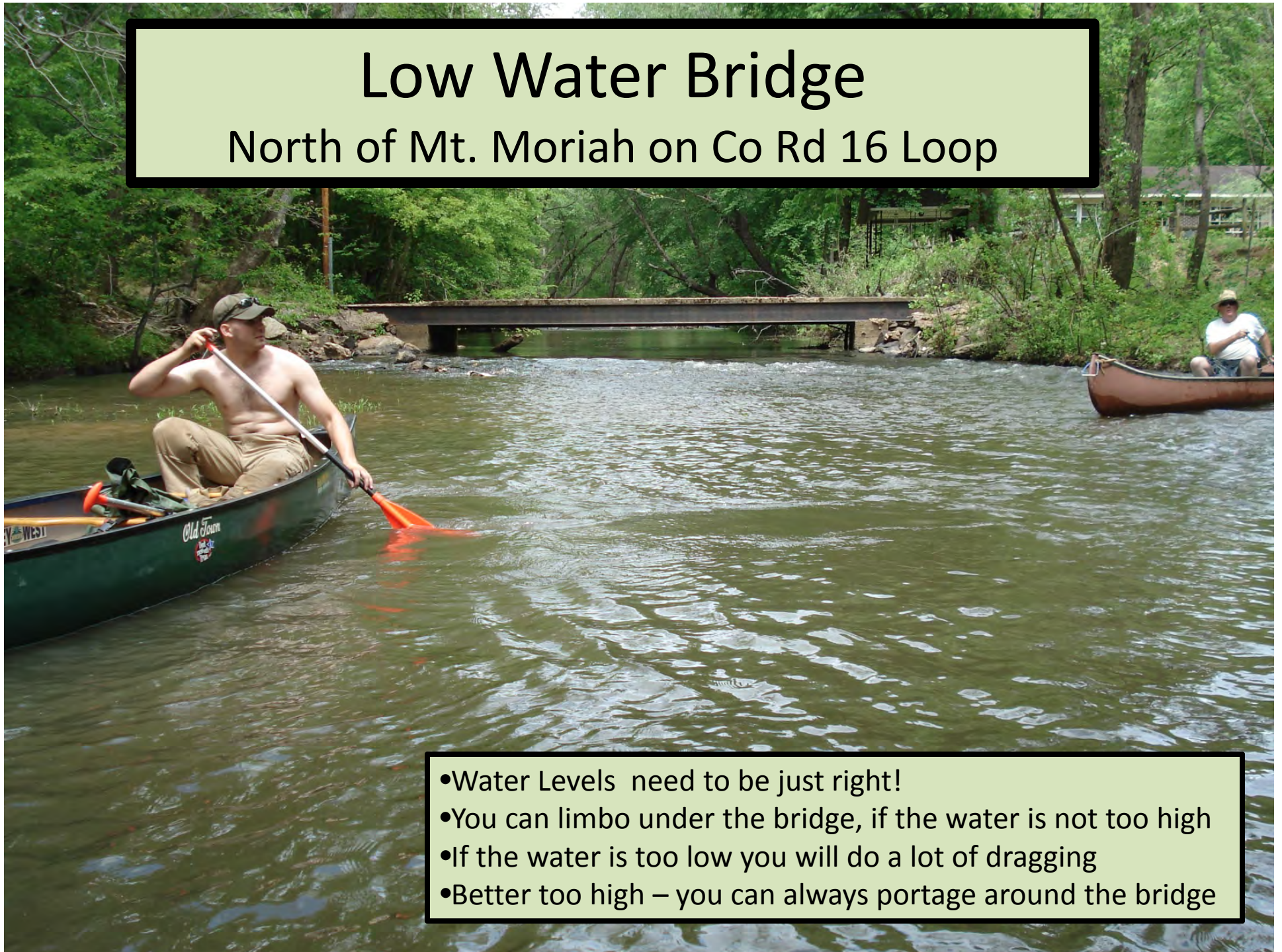
# Expect a Couple Log Jams





# Low Water Bridge

North of Mt. Moriah on Co Rd 16 Loop



- Water Levels need to be just right!
- You can limbo under the bridge, if the water is not too high
- If the water is too low you will do a lot of dragging
- Better too high – you can always portage around the bridge



# First Underwater Bridge

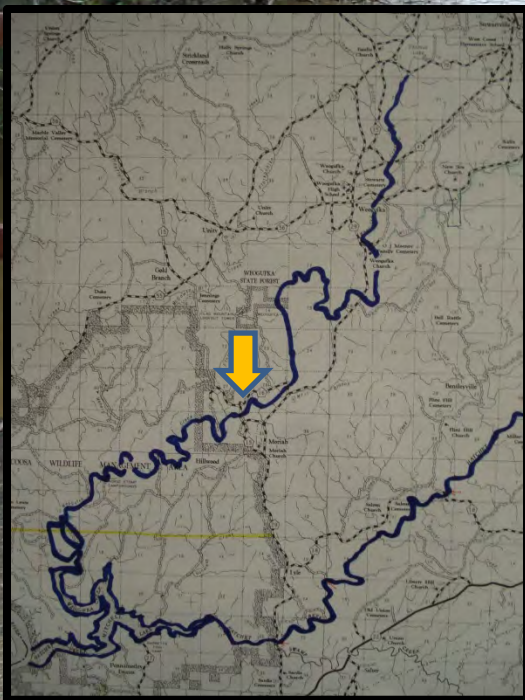
Small cement ford on private property





# Mt. Moriah (Launch #3)

Co. Rd 15 NW of Mt. Moriah Church



There is an easy launch site on the west side of the bridge and nice spot to park a vehicle



# Second Low Water Bridge

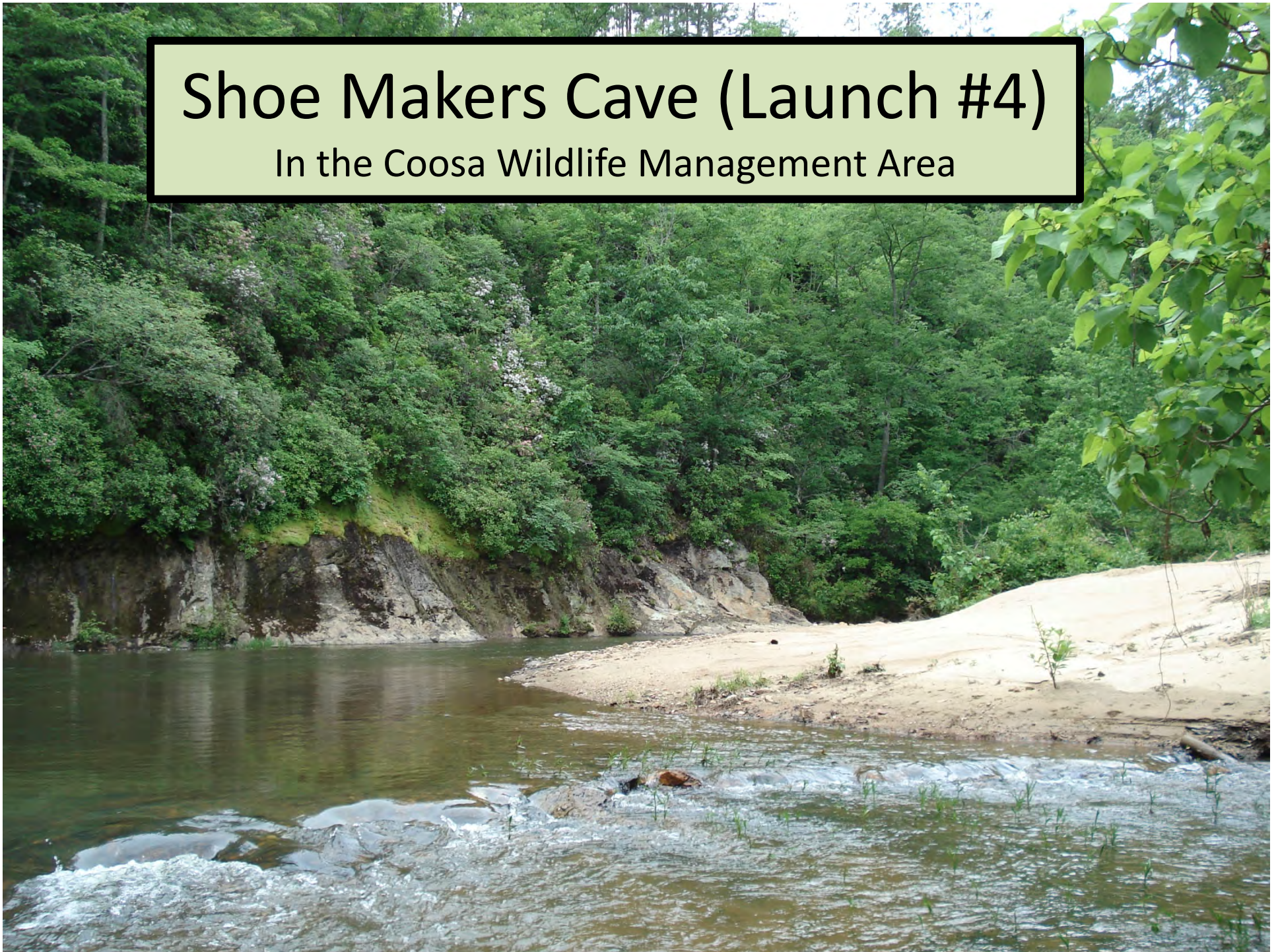
Washed out below launch #3





# Shoe Makers Cave (Launch #4)

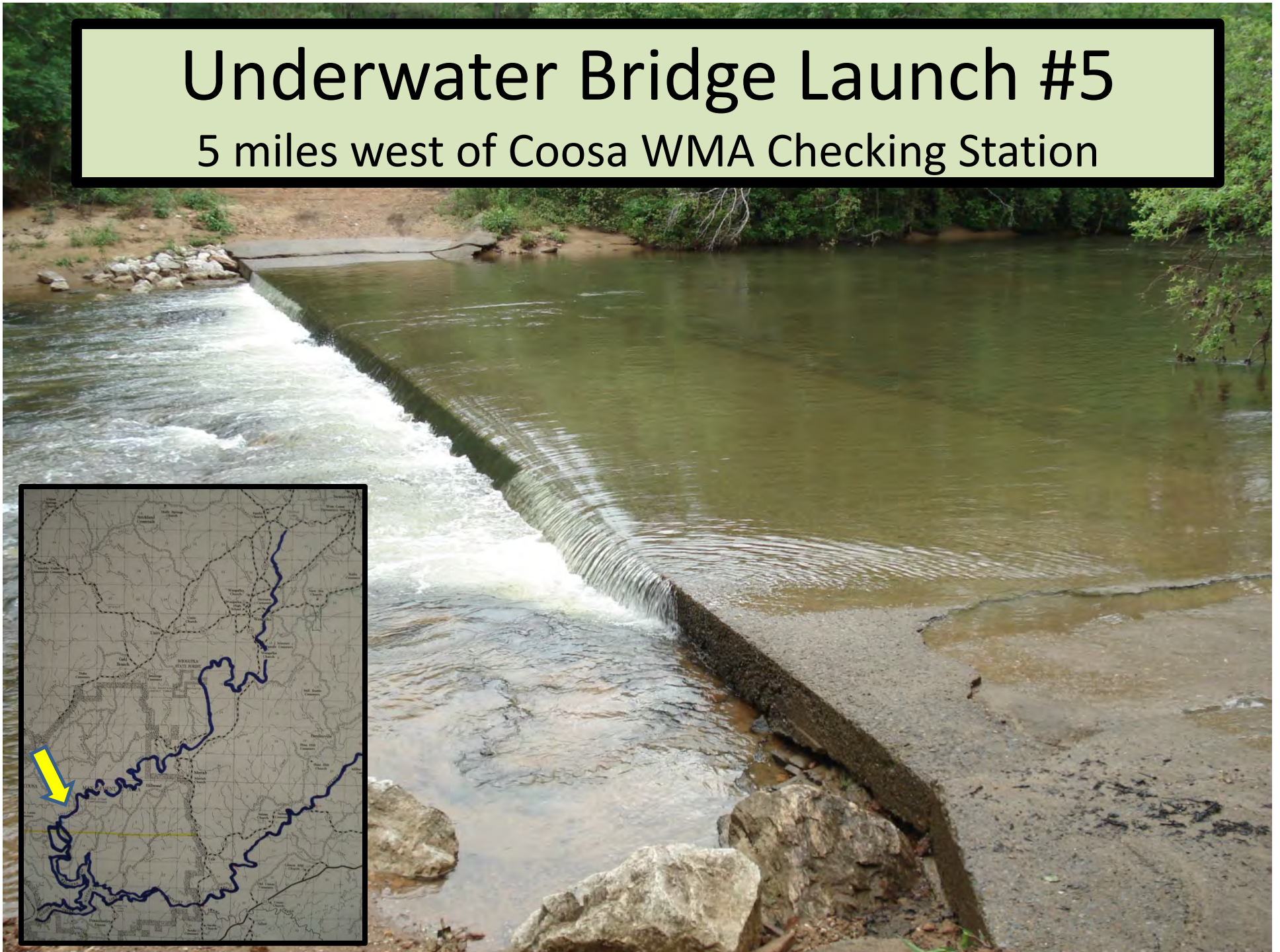
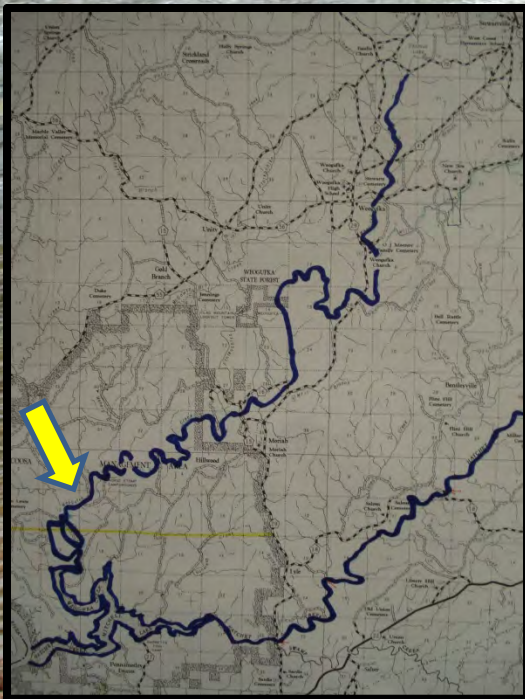
In the Coosa Wildlife Management Area





# Underwater Bridge Launch #5

5 miles west of Coosa WMA Checking Station







# Hatchet Creek

- One of the best float creeks in Alabama
- Hatchet comes from a Native American word “Hatchee” that means “upon the water”
- The creek has five or six main sections to float depending how you split it up
- The creek begins north of Goodwater and flows southwest across the county until it flows into the Coosa River (Mitchell Lake)



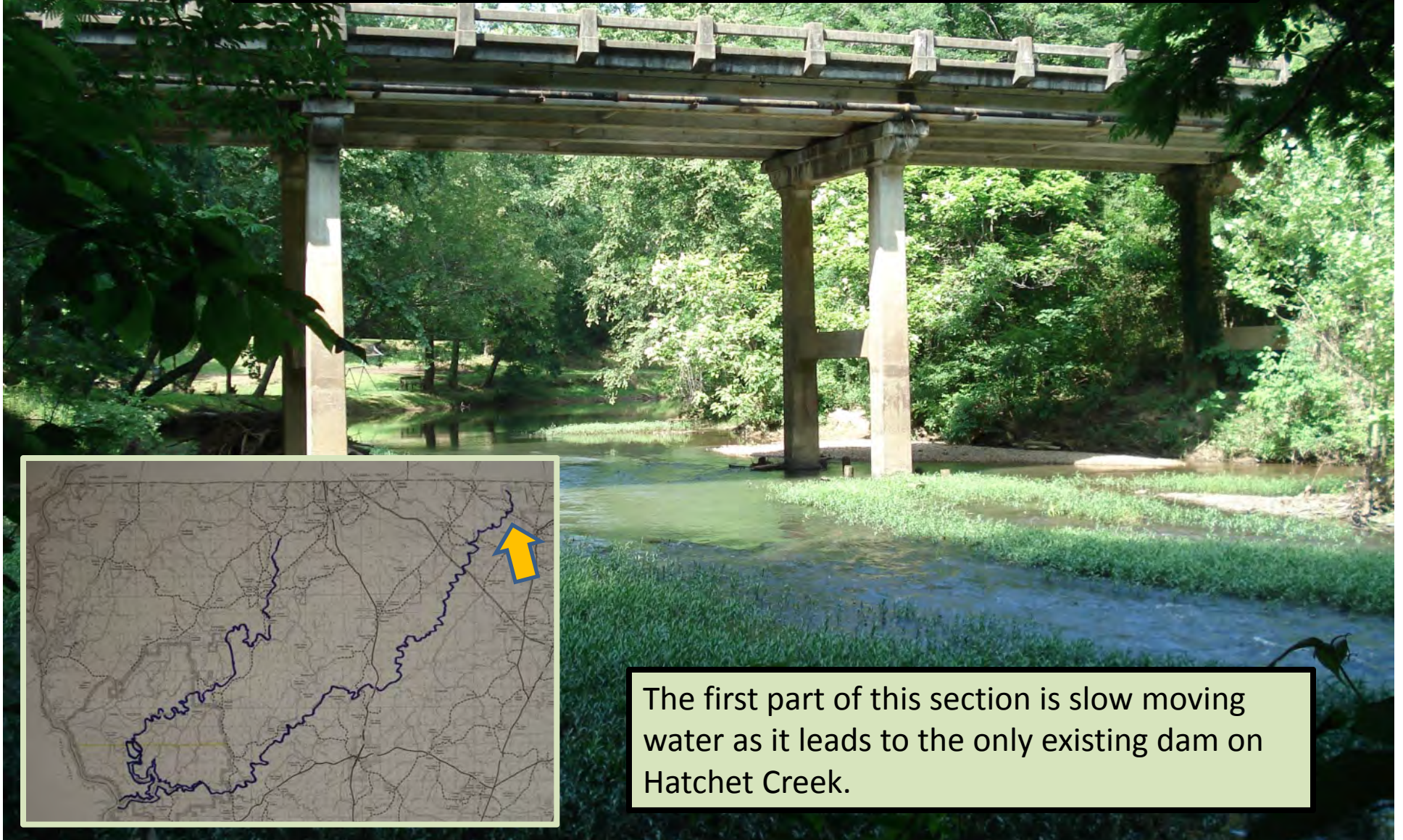


# The Headwaters of Hatchet

- Hatchet originates in Clay County and flows down to Goodwater
- This section is often too shallow to float
- The Goodwater Train Trestle is on this stretch and is an amazing structure
- The original trestle was built back in 1887 and was made of wood
- It was destroyed by fire and a new steel trestle was constructed in its place and is still used today



# Hatchet Creek (Launch #1) Hwy 511 Goodwater



The first part of this section is slow moving water as it leads to the only existing dam on Hatchet Creek.



# Goodwater Dam Portage




The best portage is on the right side of the creek along an old roadbed and trail.





# Goodwater Golf Course (Launch #2)

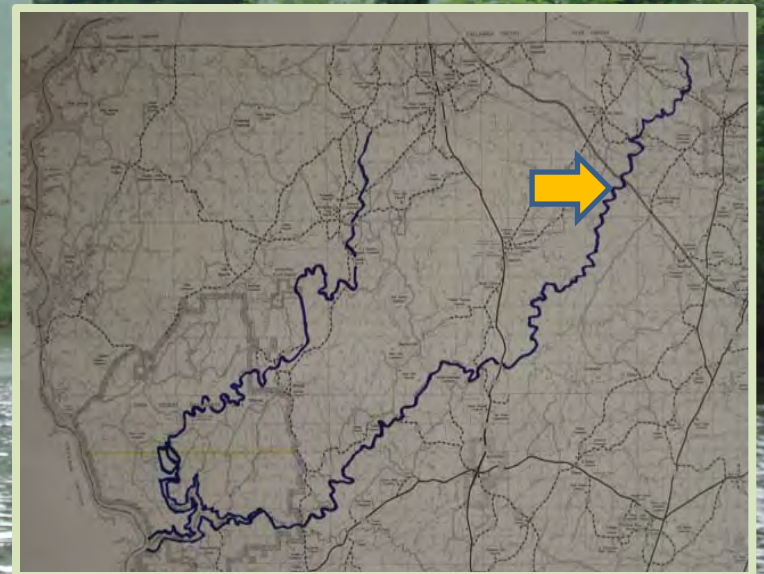
## Co. Rd. 66 east of Mt. Olive

- 
- Rock pile on left makes a good lunch break site when floating from Co. Rd. 511 to Hwy 280
  - For a short float you can put in here and float down to Hwy 280 (about a 2 ½ to 3 hour float)



# Hwy 280 Launch #3

Easy launch  
site with  
good parking





# Old Grist Mill Campsite

Free Public Camping  
Property of Norman Ray  
One hour below Hwy 280



N 33°01'34" W 86°07'48"





# Dunnam's Flat Rock Lunch Stop

N 33°00'39" W 86°08'30"





# Dunnam's Halfway Campsite

Public Camping on property  
of Tommy and Beverly Bass  
about 4 hours below Hwy 280

Located halfway between  
Hwy 280 and Hwy 231 which  
is the longest stretch of the  
creek between take outs.



# Mermaid Rock

N 32 degrees 59 minutes 18.72 seconds  
W 86 degrees 08 minutes 56.46 seconds



# Big Bend Shoals

N 32 degrees 58 minutes 59.04 seconds  
W 86 degrees 09 minutes 32.58 seconds



# Hwy 231 (Launch #4)

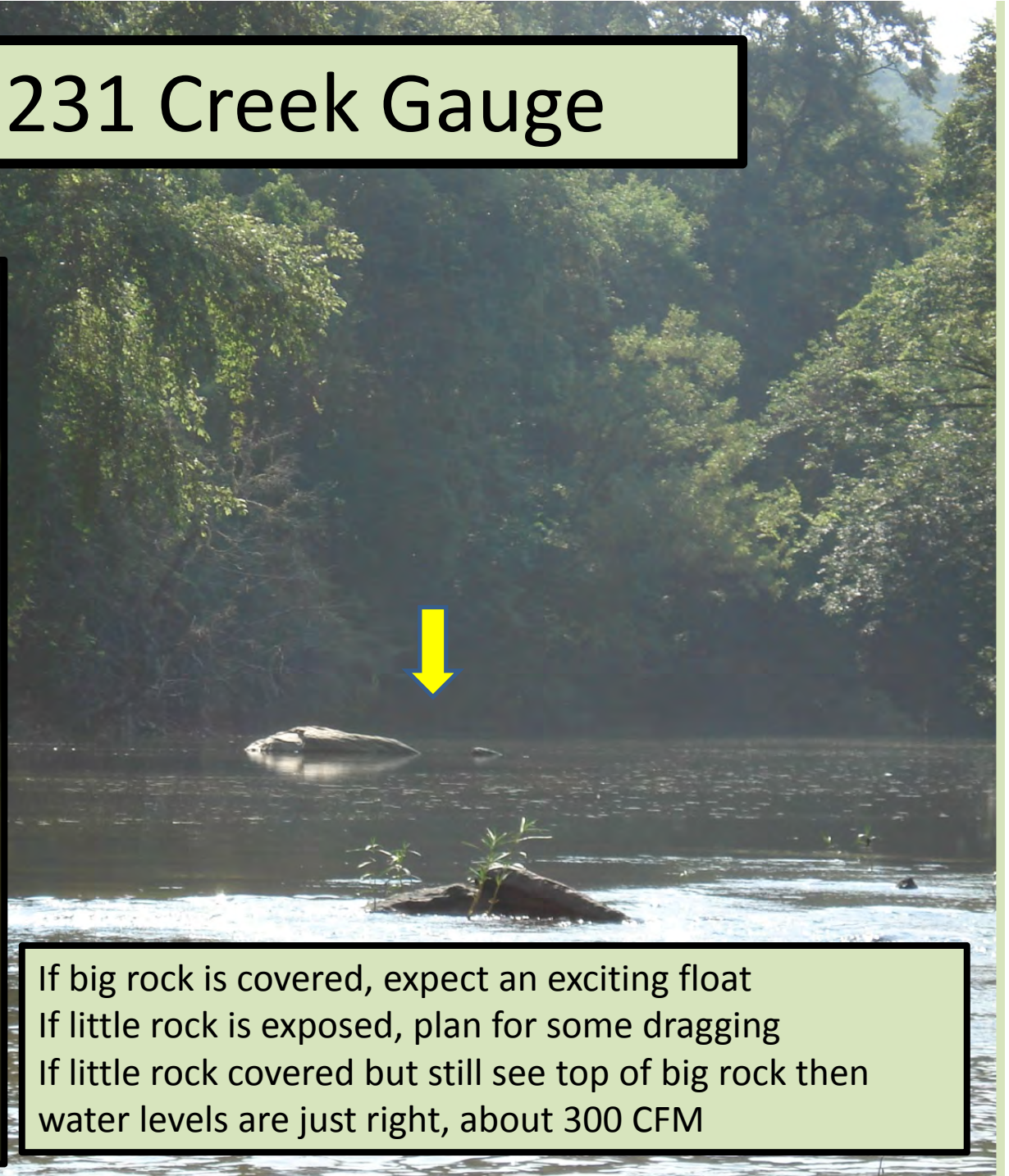
Four miles North of Rockford



Very popular launch site with easy access to the creek and good parking

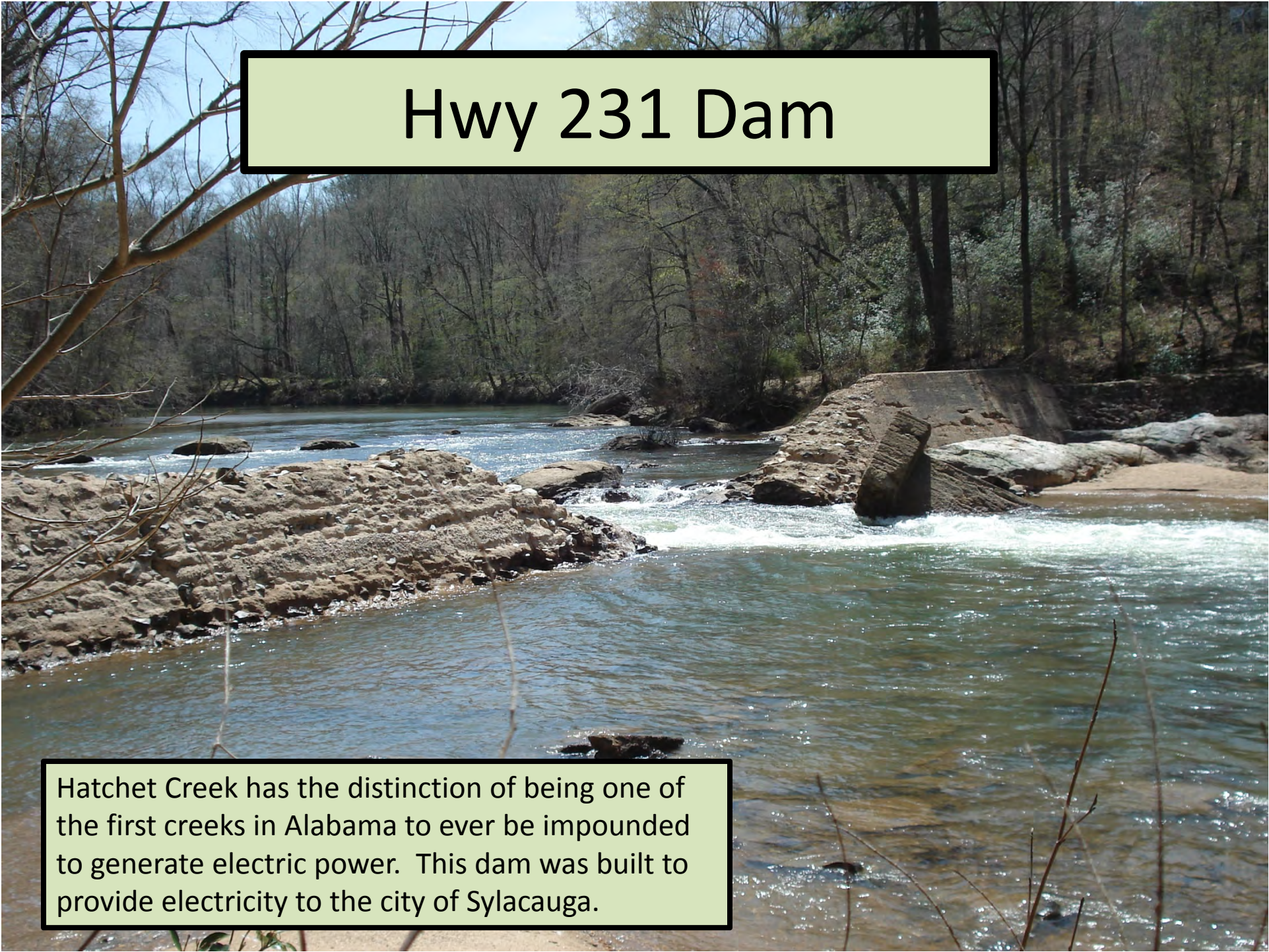


# Hwy 231 Creek Gauge



If big rock is covered, expect an exciting float  
If little rock is exposed, plan for some dragging  
If little rock covered but still see top of big rock then  
water levels are just right, about 300 CFM



A photograph of a river flowing through a wooded area. In the center, there is a concrete dam structure with water cascading over it, creating white rapids. The banks are rocky and covered with some sparse vegetation. Bare tree branches are visible in the foreground and background.

# Hwy 231 Dam

Hatchet Creek has the distinction of being one of the first creeks in Alabama to ever be impounded to generate electric power. This dam was built to provide electricity to the city of Sylacauga.



# Old 231 Dam Campsite

Short distance below Hwy 231

Public Camping on the  
property of Sally Holland



N 32°56'46" W 86°12'29"



# Privet Cove Campsite

One hour below Hwy 231



N 32°56'20" W86°13'11"

Public Camping on the property of  
David and Loraine Kelley



# Boulder Island



N 32 degrees 56 minutes 28 seconds  
W 86 degrees 13 minutes 26 seconds



# Cahaba Lilies Shoal



This is the only shoal of Cahaba Lilies on this section of Hatchet Creek between Hwy 231 and Kings Bridge.

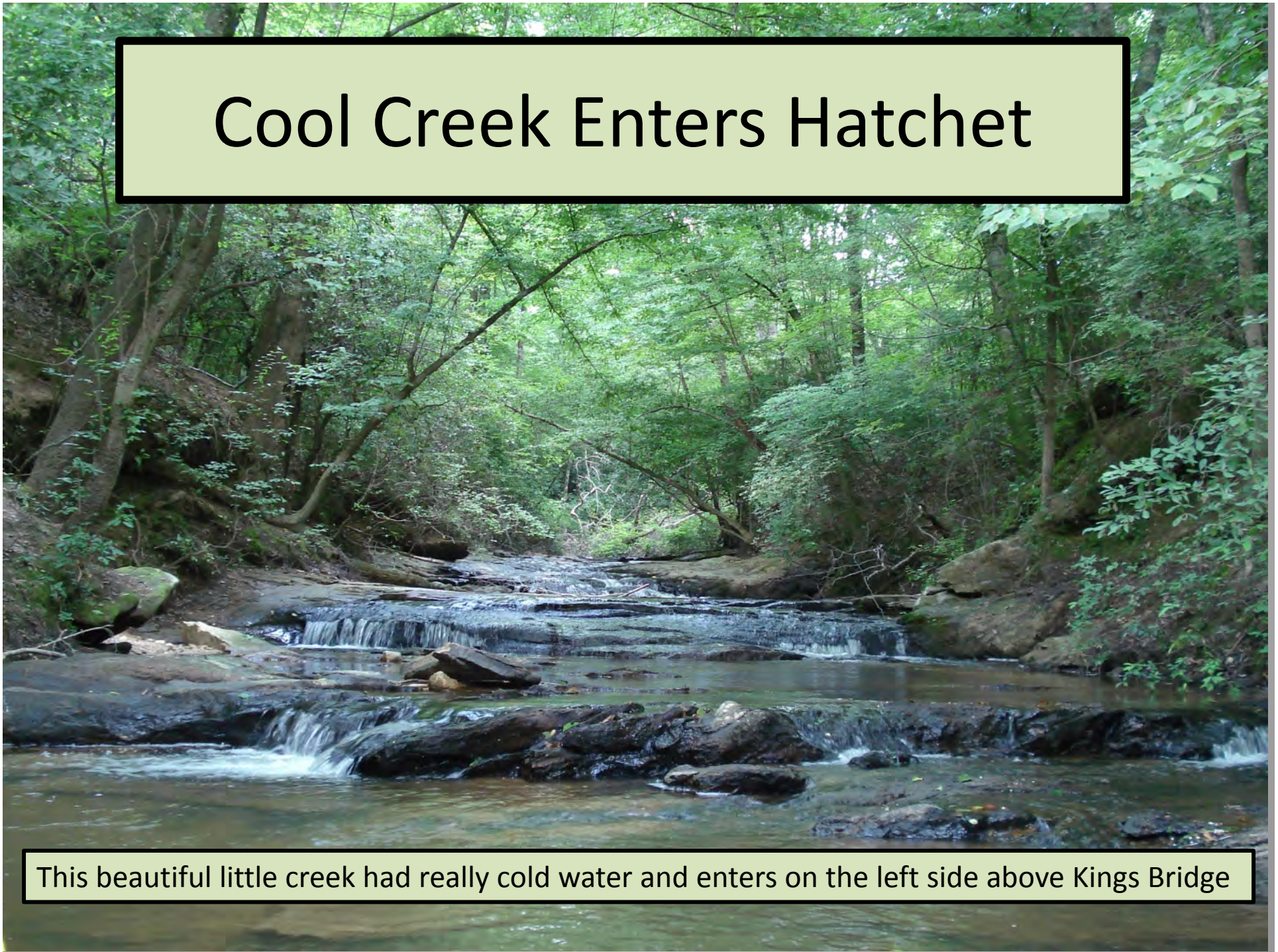
The shoal is about  $\frac{1}{4}$  mile long, wide , shallow and strewn with large rocks. Plan to do some dragging even with a kayak.

The Cahaba Lilies bloom from mid-May to mid June.

No attempt should be made to transplant the lilies, they are very specific to areas where they can grow.



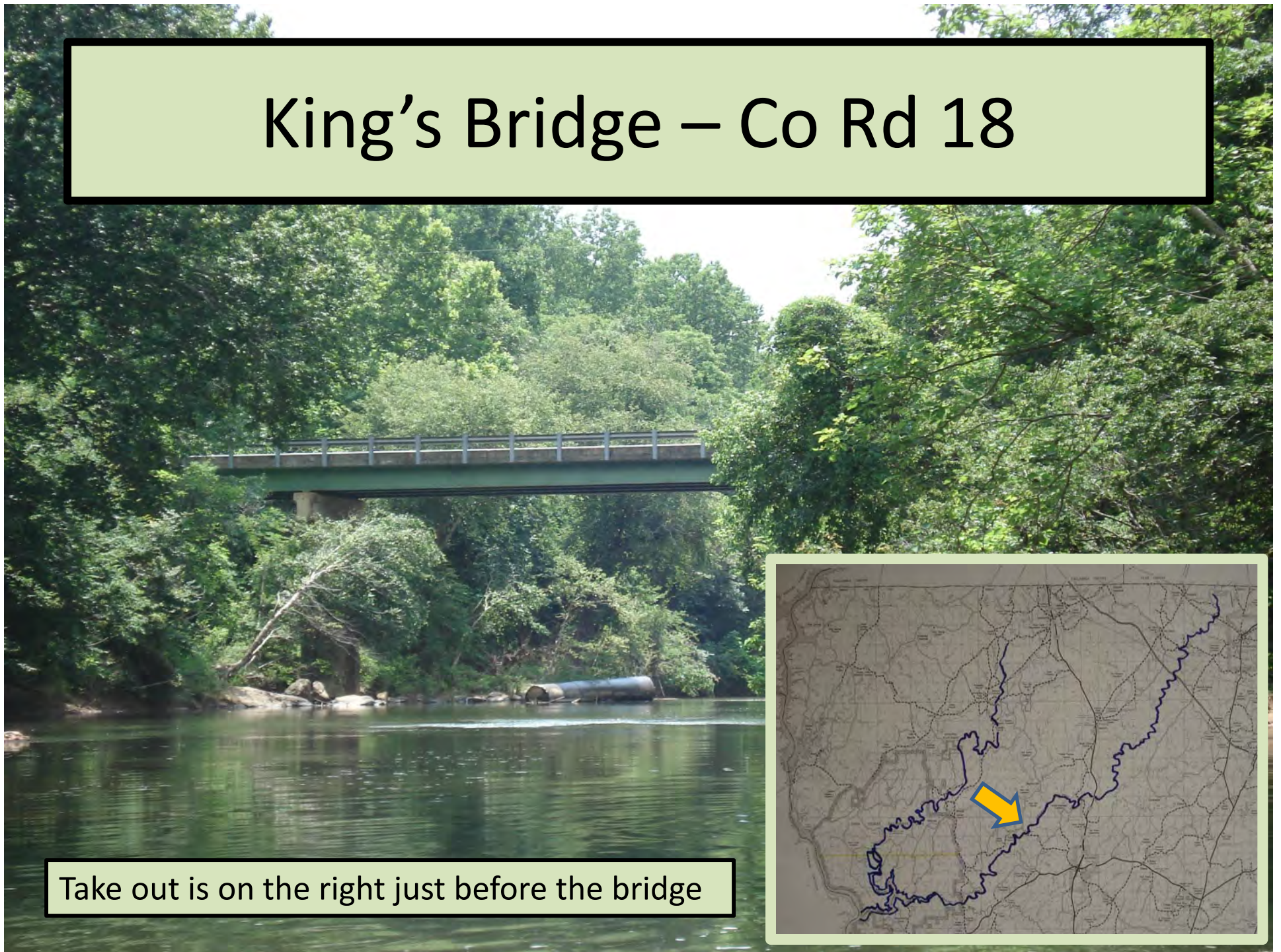
# Cool Creek Enters Hatchet



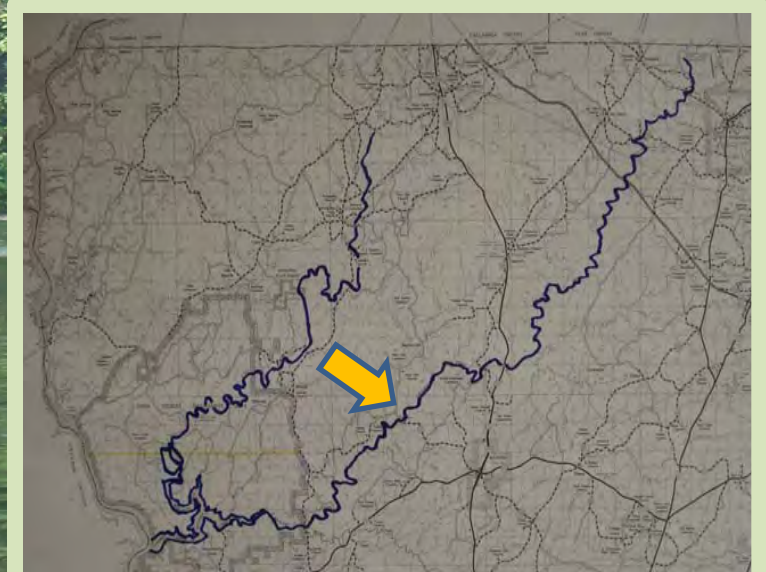
This beautiful little creek had really cold water and enters on the left side above Kings Bridge



# King's Bridge – Co Rd 18



Take out is on the right just before the bridge



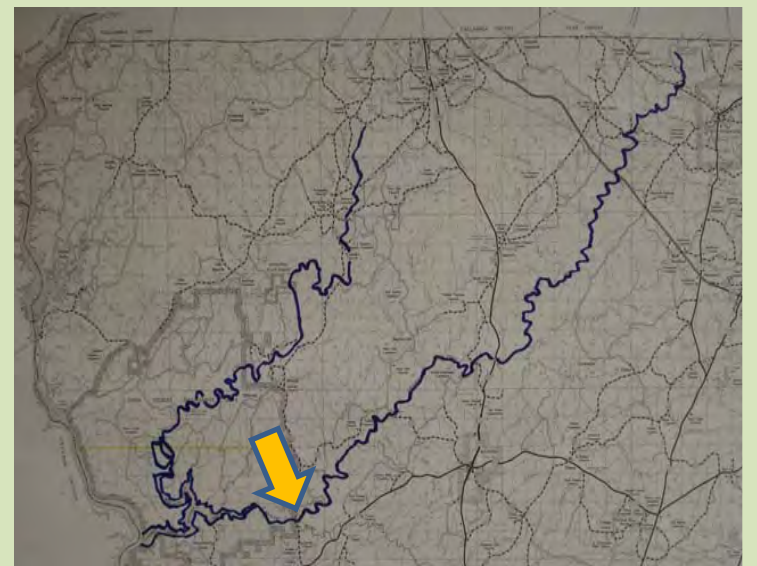


# Double Bridges – Co Rd 29

## North of Kelley's Crossroads

Water becomes slow deep and wide at this point as the creek enters Mitchell Lake

There is only one bridge – the name comes from when there was once a bridge over Swamp Creek





# A Chance to See Something Rare

Bald Eagle



Eastern Coral Snake



Cahaba Lily

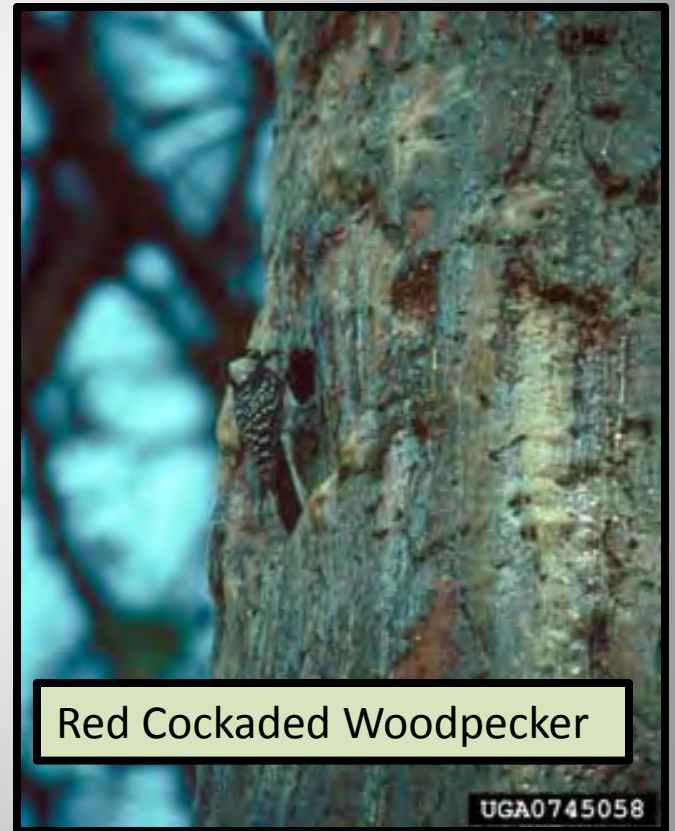




# Threatened or Endangered Species



Toulatoma Snails



Red Cockaded Woodpecker

UGA0745058



# Beautiful Flowers



Mountain Laurel



Rhododendron



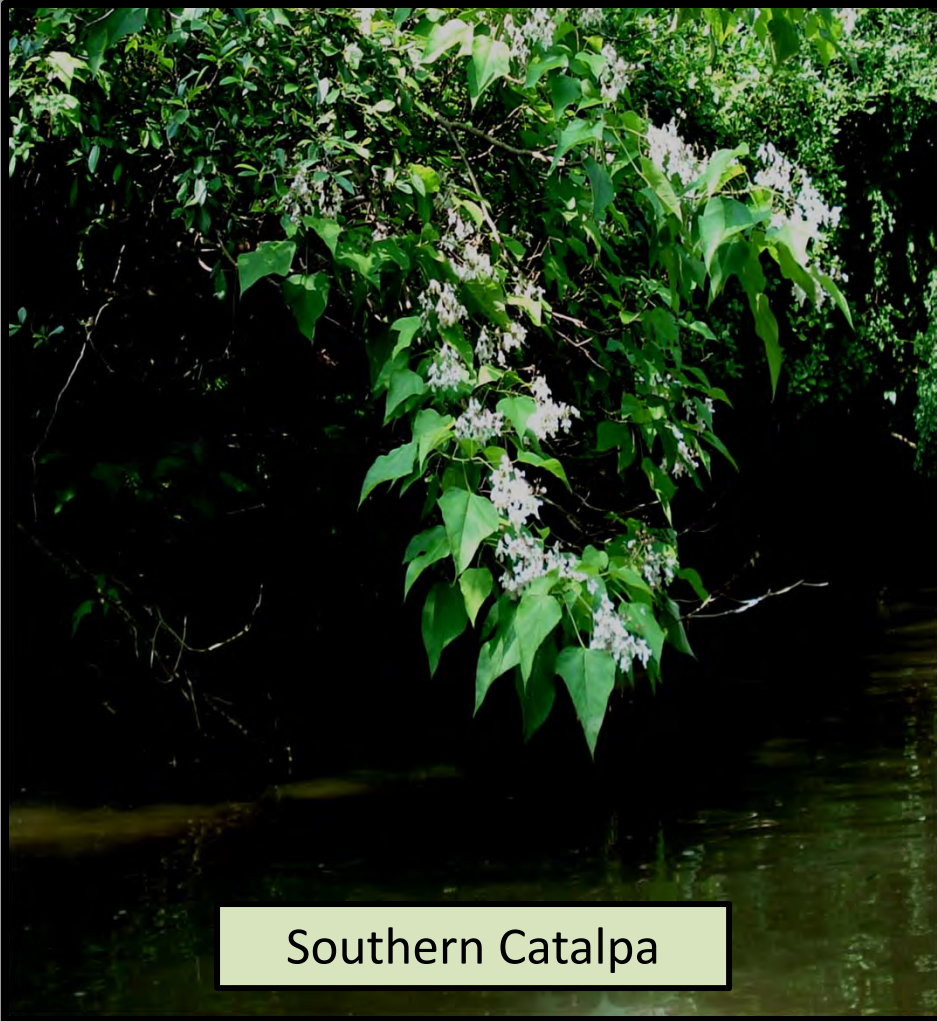
Sweet Azalea



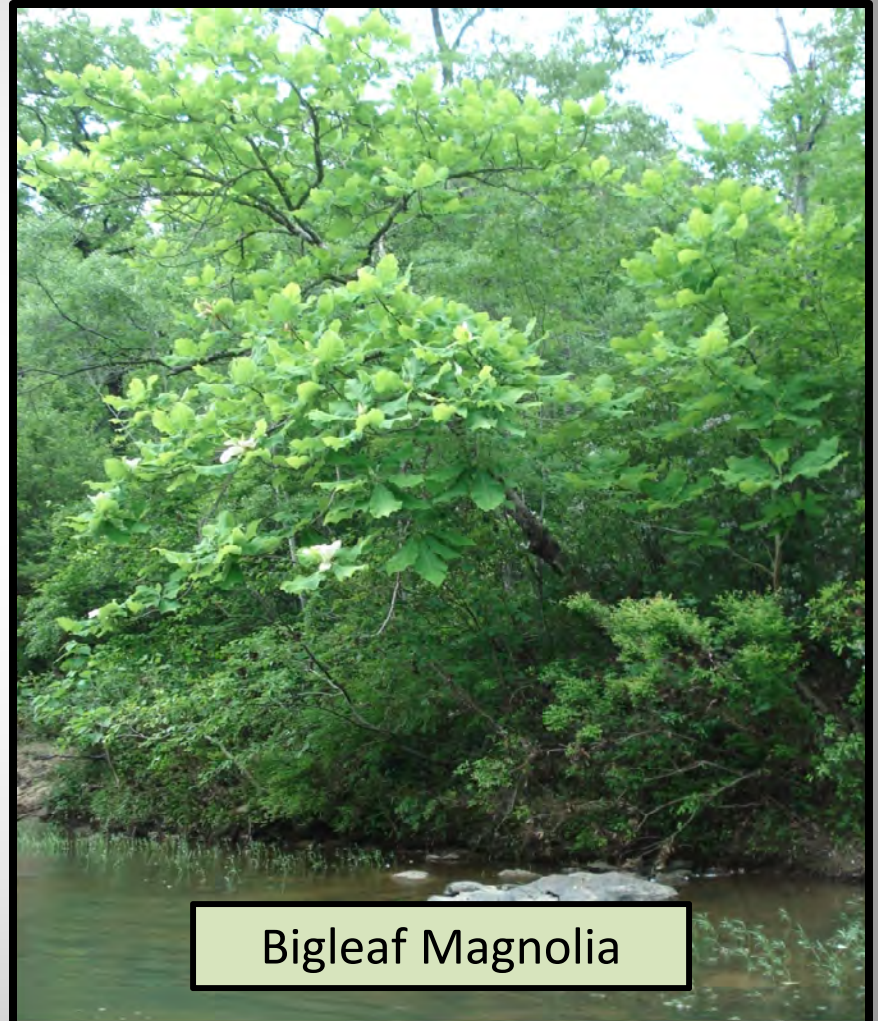
Goldenclub



# Riparian Trees



Southern Catalpa



Bigleaf Magnolia



# Interesting Fish and Wildlife





# Historical Sites



Goodwater Train Trestle



Sylacauga Power Plant



Goodwater Power Plant



Old Grist Mill Foundation



The final product is a map with Weogufka Creek on one side and Hatchet Creek on the other.



The maps were printed on semi-water proof paper.





Photographs were collected at various points of interest and then printed on the maps with the GPS coordinates.

The photos were also posted to Google Earth

This is a photo of Shoemakers Cave – believed to have been used during the Civil War to make shoes for soldiers.





Rack cards were designed and printed.

These cards will be distributed at all the State Visitor Centers.

The purpose of the card is to arouse interest, while the maps themselves are distributed through the County Extension Office.

Coosa County, Alabama • Hatchet & Weogufka Creeks

## Some Things Are Best Seen From a Canoe



**Hatchet Creek**

Paddle your way to outdoor fun and adventure on the Hatchet and Weogufka creeks in beautiful Coosa County, Alabama.

Explore the natural beauty and historical sites along the free-flowing streams that invite adventure.

- Scenic float trips
- Miles of pristine beauty
- Whitewater fun
- Camping
- Picnicking
- Historic mill sites
- Bird watching
- Photography


**Outdoor Adventures**



**Kayaking**

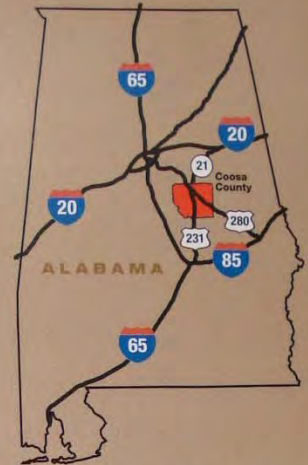


**Cahaba Lily**



**American Bald Eagle**

- The best time to view the Cahaba Lilies is around Memorial Day.
- Free public camping is available at designated sites.
- Most float sections can be completed in one day (5-6 hours).
- Both creeks are designated as spurs of the Alabama Scenic River Trail.
- Most photos include GPS coordinates and are referenced in Google Earth.
- Maps are available for free at the Coosa County Extension Office or by mail (small charge for postage and handling). The map may also be viewed online at [www.aces.edu/go/245](http://www.aces.edu/go/245)
- March through May is the best time to float because low water levels may become an issue from midsummer to fall.



Distances to Coosa County from around the Southeast

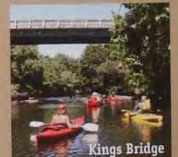
<b>Birmingham</b>	<b>66 miles</b>
<b>Montgomery</b>	<b>42 miles</b>
<b>Huntsville</b>	<b>167 miles</b>
<b>Mobile</b>	<b>212 miles</b>
<b>Atlanta</b>	<b>146 miles</b>
<b>Chattanooga</b>	<b>175 miles</b>

### Important Contact Numbers

Coosa County Extension Office	(256) 377-4713
Coosa County Sheriff's Office	(256) 377-2211
Coosa Valley Medical Center	(256) 401-4000
Alexander City Rescue Squad	(256) 825-4264
Alabama Forestry Commission (To Report Wildfires)	(800) 492-3711
Geological Survey of Alabama (Topo Maps)	(205) 247-3636

### Helpful Websites

Coosa County Extension	<a href="http://www.aces.edu/counties/Coosa">www.aces.edu/counties/Coosa</a>
Geological Survey of Alabama (Topo Maps)	<a href="http://www.gsa.state.al.us/publications.aspx">www.gsa.state.al.us/publications.aspx</a>
U.S.G.S. (Alabama Stream Flows)	<a href="http://www.waterdata.usgs.gov/al/nwis/rt">www.waterdata.usgs.gov/al/nwis/rt</a>
Alabama Scenic River Trail	<a href="http://www.alabamascenicrivertrail.com/">www.alabamascenicrivertrail.com/</a>
Outdoor Alabama (ADCNR)	<a href="http://www.outdooralabama.com/">www.outdooralabama.com/</a>
Google Earth	<a href="http://www.google.com/earth/index.html">www.google.com/earth/index.html</a>



The Alabama Cooperative Extension System (Alabama A&M University and Auburn University) is an equal opportunity educator and employer. • USDA, New Mar 2012, ANR-1426 [www.aces.edu](http://www.aces.edu)



A full size stand up display was developed to be used for promotion of the project at various workshops, festivals, exhibits, fairs and other locations.

The project and maps have also been promoted on television and radio.

We have plans to host a Hatchet Creek Festival next spring to include an overnight campout float, speakers and live music.





# A Project of the Alabama Cooperative Extension System, Coosa County Office And the Coosa Valley R.C.& D Council



*Alabama A&M and  
Auburn Universities*

